



**IS COLOCATION
RIGHT FOR
YOUR IBM POWER
SERVERS?**

**6 factors to consider before
making a decision**



INTRODUCTION

Colocating your IT infrastructure is becoming a popular choice for organisations looking to remediate risks associated with traditional on-premise solutions. While the concept of housing privately-owned servers in a third-party data centre may seem to be the right choice for some companies, this approach has several limitations, especially when compared to using a private, hybrid or multi-cloud option.

So, before you collocate, make sure you have considered all the below factors – this will help you determine whether collocation is the right choice for your business.

FACTORS TO KEEP IN MIND BEFORE COLOCATING YOUR IBM POWER SERVERS

Here are the top 6 considerations you must bear in mind before you decide to colocate your IBM i workloads.



01. Colocation & private cloud are different



02. Renewals & maintenance can become inconvenient



03. There's a lack of flexibility, scalability, and futureproofing



04. Reliability & uptime are critical



05. There's a growing demand for physical space



06. You are responsible for your compliance & security

1

COLOCATION & PRIVATE CLOUD ARE DIFFERENT

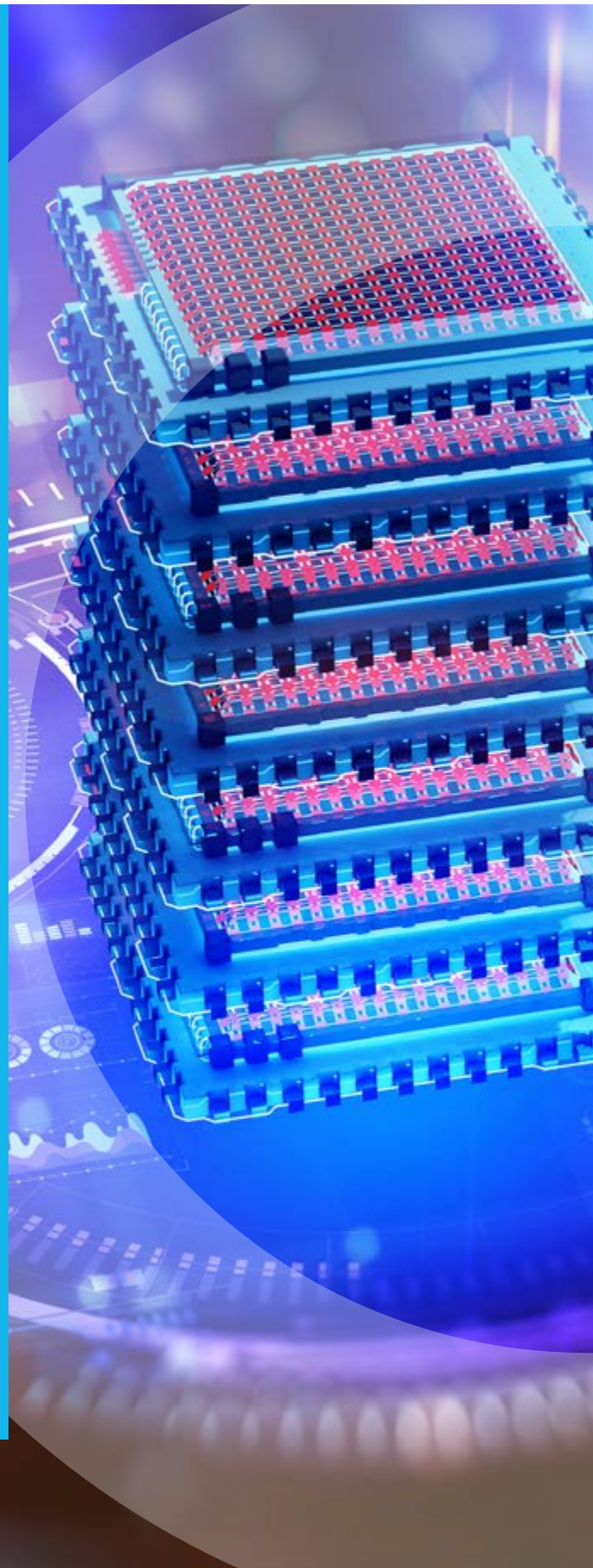
Many people interchangeably use “private cloud” and “colocation”. However, these are two entirely different things.

A private cloud allows users to focus purely on their applications whilst colocation allows businesses to subscribe to data centre facilities for their physical assets.

Companies that adopt a colocation strategy will continue to retain ownership and management of their physical assets as if they remained on-premise.

The major reason we see companies collocate their infrastructure is to mitigate localised risks associated with on-premise facilities such as power, cooling etc.

A private cloud will provide and manage all the virtual assets including networking and security, within multiple data centres offering full levels of redundancy and often 100% uptime. This allows a business to focus purely on their applications.



2

RENEWALS & MAINTENANCE CAN BECOME INCONVENIENT

A vital aspect of retaining ownership of your assets is ensuring hardware and software maintenance contracts are active, ensuring vendor support is available at all times.

Managing all contracts can be time-consuming and present a huge risk to the business if left to lapse.

Expired maintenance contracts mean no SLA when you need it the most with additional costs for support. Vendors have been known to 'back charge' to get back into maintenance.



3

THERE'S A LACK OF FLEXIBILITY, SCALABILITY, AND FUTUREPROOFING

Your technology will need to keep up with the pace of your business as you expand.

This will include compute resources (CPU, RAM, etc.), storage, networking speeds and bandwidth requirements. The ability to scale these resources can be challenging and will not be cost-effective if the requirement is only short term.

In a colocation environment, you will need to consider how you will manage the ability to scale your technology, whilst only paying for what you need.

4

RELIABILITY & UPTIME ARE CRITICAL



According to a study by Gartner, each minute of downtime can cost organisations up to **\$5,600**, which can be catastrophic for any business and can have long-lasting impacts as we as cause reputational damage.



To maintain the degree of reliability of the critical applications and services, a business must deliver as close as 100% of uptime. When choosing to colocate, it is your responsibility to manage the uptime and recovery from your infrastructure since you own it, and the colocated data centre will focus on data centre services such as power and cooling.

5

THERE'S A GROWING DEMAND FOR PHYSICAL SPACE

The need for physical space is particularly important to businesses, especially to those accumulating a significant amount of data. The huge data volume necessitates the exponential growth of storage solutions and queries.

Therefore, before you colocate, have a clear road map for future growth as organisations are finding it challenging to fulfil this increasing demand for physical space.

6

YOU ARE RESPONSIBLE FOR YOUR COMPLIANCE AND SECURITY

While the physical security of your infrastructure facility is looked after by the data centre; you are still responsible for the compliance of the physical hardware (firmware) and software (operating system) ensuring they are kept up to date to minimise any impact from cyber threats.

SO, IS COLOCATION RIGHT FOR YOUR BUSINESS?

If you have technical resources on your staff who can update and maintain your server equipment, then colocation can make your life a lot easier as you are remediating localised risks associated with an on-premise facility.

However, there are other options, like private cloud, which can help overcome several challenges that colocation fails to provide.

One of the hidden cost savings associated with private cloud is that businesses no longer have to worry about the costs associated with the hardware lifecycle refresh, as this becomes the responsibility of the cloud provider to ensure its infrastructure is maintained, upgraded and continues to provide the optimal performance for your application as part of the subscription.

If you have questions about colocating your IBM Power Server or moving it to the cloud, we can help.

Evolution Systems is Australia's leading provider of IBM i in the cloud and has been offering IBM Power virtual machines since 2010. With each generation of IBM Power cloud platform more powerful than the last, and allowing users to do more with less, we have now architected our 4th generation of private cloud infrastructure to bring our clients some of the best technology available today.

We also offer a choice of managed service plans to make sure you're getting just the right amount of support to match your business requirements.

Let's talk about supporting your company's IBM Power Systems needs.



BOOK YOUR MEETING